



Forced Physics

Investor Presentation

Innovative - Transformative - Sustainable

The Problem

AI is accelerating data-center growth and driving global energy resources to the edge, while today's cooling solutions fail to keep pace

Electricity Waste



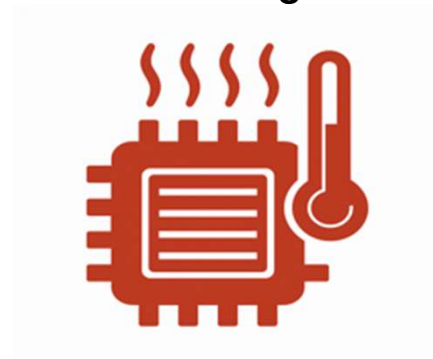
Cooling systems consume 30% or more of Data Center total power

Water Resources



Data Centers consume hundreds of billions of gallons of water per year, creating massive cost and sustainability challenges

Cooling



New AI chips are exceeding the limits of all existing cooling technologies, reducing performance

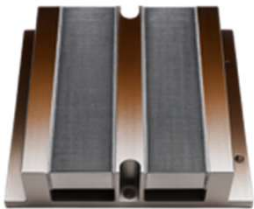
The Solution

Cooling without water, complexity, refrigerant, and lower operating costs

Product Highlights

- Uses only air to cool high-power electronics
- Removes cost, complexity, and demands of liquid cooling
- Returns wasted power for more IT load
- Supports more powerful chips
- Allows data centers to deploy more compute at lower cost

Forced Physics JouleForce™ Product Designs



AMD SP5 Heatsink

- The most powerful commercial air-cooled heat sink design ever created
- Can cool up to 1,200w, more than 2x typical 500w SP5 limits



The Microchannel Array

- Stamped aluminum structure for low-cost, high-volume production
- Shapes airflow into the molecular beam that drives JouleForce cooling

Air Only

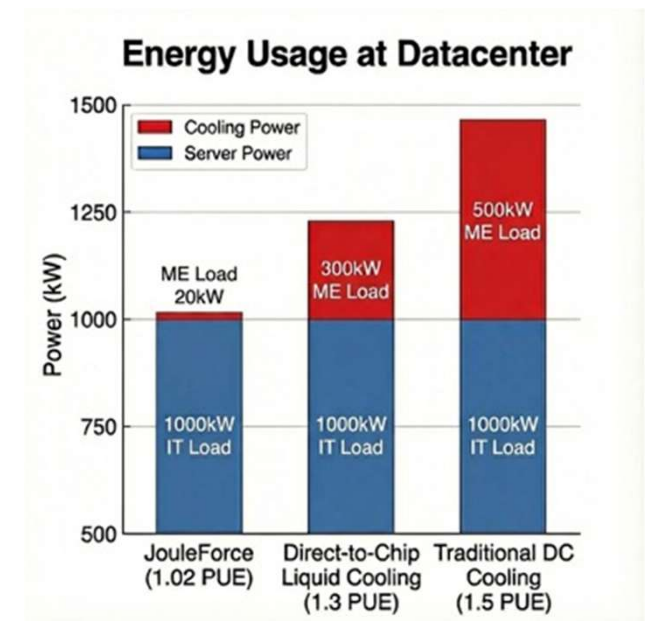


No liquids, pumps, or plumbing required for high power chips

No Water Wasted



Keeps water where it's needed, not for data centers



Meet JouleForce™

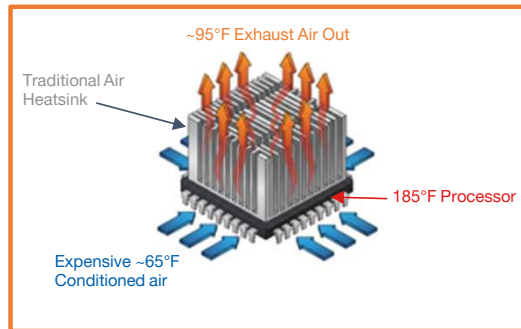
Forced Physics has taken a previously unexploited physics phenomenon and engineered it into a commercially deployable system that we call JouleForce™

Key Highlights

- Incubated at the Army Research Lab and MEMS and Nanotechnology Exchange by inventor Scott Davis
- Patented microchannels that shape air into a cooling beam
- Zero water, no liquids, no refrigerants, only air
- Simple, reliable, and massively scalable

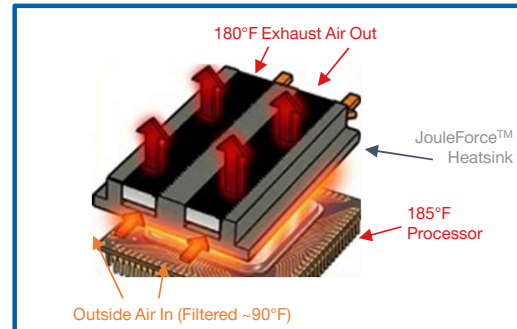
The temperature difference between the intake air and the exhaust air shows how much heat each system is capable of removing

Traditional Heatsink



Relies on cold, conditioned air and water-based cooling systems, which drive up cost, consume lots of water and cap performance

JouleForce™ Heatsink



Uses only filtered outside air, while delivering superior cooling to the chip

Traditional Air Heatsink

The exhaust air only rises about 30°F vs the cold air going in. That small temperature change shows the heatsink removes very little heat, and is why datacenters supply extremely cold, energy-intensive conditioned air just to keep chips cool at 185°F

JouleForce™ Heatsink

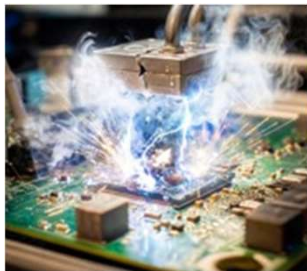
The exhaust air rises close to 90°F above the intake air. That large temperature change shows the array is removing far more heat. Even with 90°F outside air entering the system, the chip stays within its operating limits because the array pulls heat far more efficiently. With higher airflow, it can handle even hotter inlet air while maintaining stable chip temperatures

JouleForce™ vs Liquid Cooling

There are three main reasons that make liquid cooling difficult to deploy in a data center

Electronics Hate Water

- Pressurized water over live electronics is not a good idea
- Leaks, clogged manifolds, cracked cold plates
- Coolant contamination across a chassis
- A single leak can shut down an aisle and cause massive damage



“No one wants water flowing through a hundred-thousand-dollar server”

Chips are Too Hot for Liquid Cooling

Modern chips exceed what liquid cooling can handle

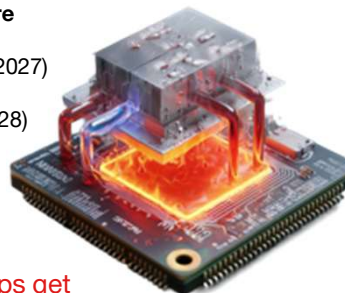
- 2025 AI GPUs run **2500W+**
- Liquid DTC systems stall near **1500W**
- TDP roadmaps exceed what liquid cooling can sustain

Liquid cooling has hit a physics ceiling, but **JouleForce has not**

Chips in the future

NVIDIA plans:

- Rubin Ultra (2027)
3,600W
- Feynman (2028)
4,400W



“When chips get too hot, liquid cooling fails”

Complex vs Simple Solution

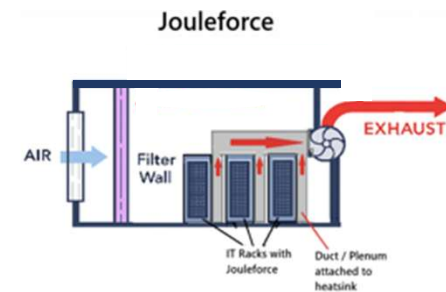
Liquid Cooling Requires:

- CDUs, coolant loops, pumps, hoses, manifolds, chillers, evaporative towers, water treatment, refrigerant, pressure balancing, glycol, moisture control, and leak detection
- More components mean higher failure rates, higher maintenance, and higher operating cost

JouleForce Requires:

- Filtered air + JouleForce + blower

That's it... Only 1 moving part, the blower!



Proven Results

Proven JouleForce™ performance across multiple real-world projects

Project #1 (Summer 2021):

AMD SP3 Socket, 200W 64 core

- Operated outside in Phoenix, AZ for 3.5 years, operating 24/7/365 in temps reaching 115°F
- [Edgeility -Compute Anywhere](#)
- Maintained optimal chip temp in hot desert climate!

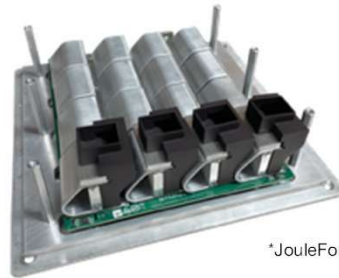


*Example of FP DCT's Edgeility Box that was used in this "Compute Anywhere" Project

Project #2 (Summer 2024):

Modified Bitmain S19 Pro+ hydro Bitcoin Miner

- Operated outdoors in 111°F Held ASICs at 75°C to target range
- Delivered **+34% hashrate** over water cooling
- Kept performance stable where liquid cooling could not



*JouleForce™ Bitcoin Miner cutaway

See it in action!

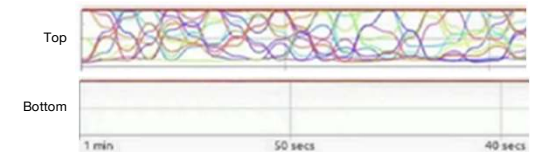
<https://youtu.be/aZJM68idXeQ>

JouleForce™ keeps all cores at full speed with no throttling!

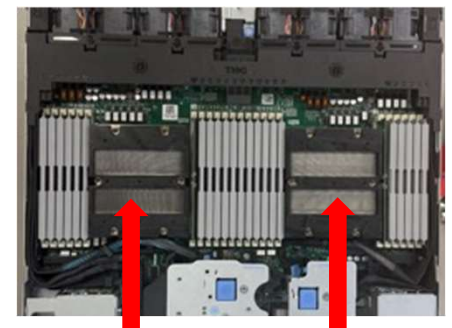
Project #3 (Spring 2025):

Modified SP5 AMD Dual CPU on Dell R6625 Server

- At room temperature, JouleForce™ held every core at **99%** utilization
- Reduced CPU temps by **up to 29%**
- 400+ Watt Processor (very hot)



*Actual CPU utilization screenshots at identical conditions
Top: Server w/Dell heatsink, Bottom: Server w/JouleForce™



*Photo of actual Dell R6625 w/JouleForce™ Cooling

Market Opportunity

AI infrastructure demand is exploding, and driving record cooling investment

Growing Demand

- AI data center power demand is projected to rise from about 20 GW in 2025 to more than 100 GW by 2030, the fastest infrastructure expansion in computing history



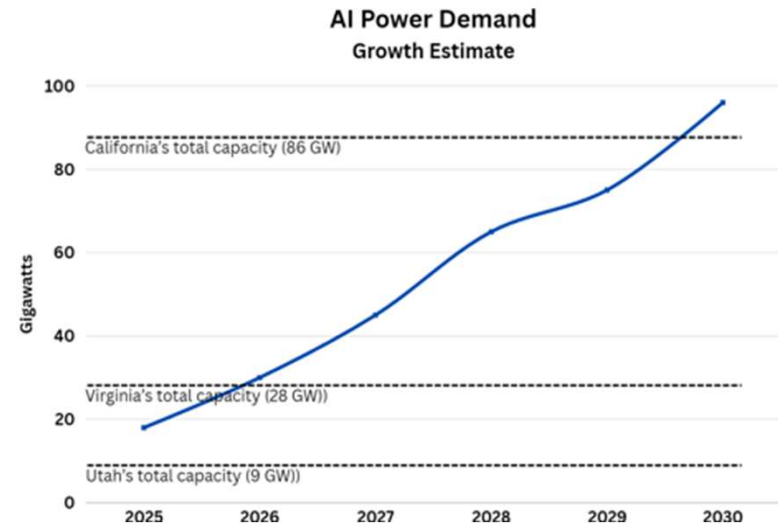
Increase in Investment

- Global data center cooling spend is projected to rise from 16.8B dollars in 2024 to 42.5B dollars by 2032



Pressure to Change

- Cooling spend is already in the tens of billions, driven by complex liquid systems that data centers struggle to scale and maintain
- Capturing just **one percent** of this shift equals hundreds of millions in revenue



Power demand for AI is expected to exceed many states entire power grid supply by 2030

No other cooling technology meets AI's performance requirements while achieving real environmental goals

Water Savings

- 20.8 billion gallons p/yr (uses NO water)
- Annual water use of ~500,000 U.S. residents
- Enough water to sustain Atlanta, GA for one year

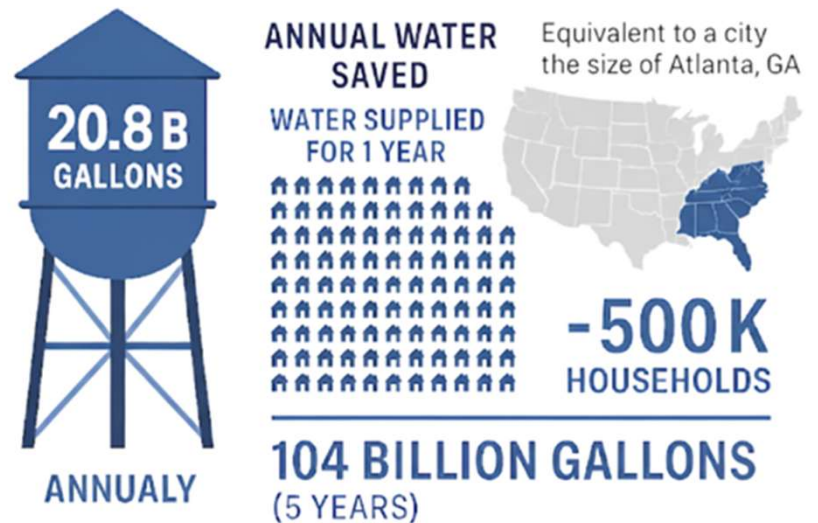
Energy Reduction

- 10,950 GWh / year in reduced mechanical load
- \$815 million per/year in power savings at (\$60 per MWh)
- 900 Megawatts of power saved on 5 GW facility

CO₂ Avoidance

- Reduced mechanical load avoids ~10 million tons of CO₂ annually
- Equal to removing 2 million cars from the road

Note: Numbers based on Meta's 5 GW site model and its projected JouleForce™ savings



Use JouleForce™ Cooling and save our planet's water!

Commercialization Strategy

Business Model



- Government & Critical-Infrastructure Reference Accounts
- Direct Hardware Sales
- Embedded Hardware Supply Agreements
- Volume-Based Intellectual Property Licensing
- High-Margin Engineering & Professional Services

Go-to-Market Strategy



- Strategic OEM Partnerships
- Hyperscale Adoption
- Channel Enablement via Design & Integration Partners
- Targeted Early-Adopter Program
- Flagship Scale Deployments
- Public Sector & Policy Engagement
- Industry Awareness Campaign

Scalability



- Manufacturing Scalability achieved through stamping process
- Solid-State Architecture
- Infrastructure Efficiency
- Universal Hardware Compatibility
- Flexible Deployment Timeline

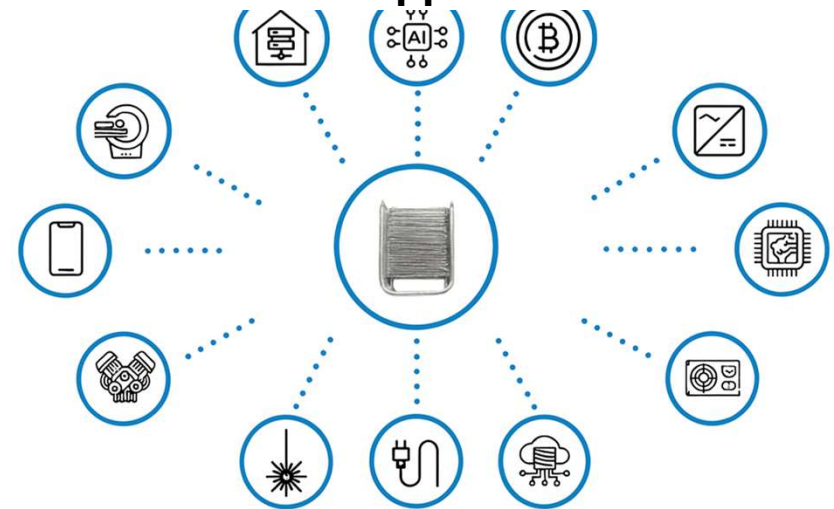
JouleForce™ is positioned to scale with unprecedented AI and Machine Learning demand

Patent Portfolio & Market Applications



- ✓ 61 global patents protecting JouleForce™
- ✓ Coverage of method, geometry, and system design
- ✓ Covers a broad spectrum of cooling use-cases

Future Applications



- Seamless datacenter retrofitting
- High power density AI systems
- Crypto currency mining
- Power conversion electronics cooling
- CPU and GPU cooling
- Conduction cooled power supplies
- Edge and Modular data centers
- Electronic interconnect equipment
- Lasers
- Electric and combustion vehicles
- Mobile electronics
- Medical imaging equipment

Leadership Team

Scott Davis
Founder &
Chief Executive Officer



- Founder and Inventor of Forced Physics
- More than 40 years of experience in the Information Technology Industry, including with Digital Equipment Corp (DEC), as a Business Manager of a \$300M Division, and Giga Information Group, a tech analyst firm
- His invention of molecular beam-based cooling was the result of years of research and study of kinetic theory
- Innovator in MEMS design

Robert Davis
Chief Administrative
Officer & General Counsel



- Served as General Counsel or an insurance company with 2,000 employees and annual revenues exceeding \$400 million
- A veteran of the U.S. Army, he served as a Captain in the Judge Advocate General's Corps for 5 years at Fort McClellan, AL
- Robert earned his degree at McGeorge School of Law, University of the Pacific, and undergraduate degree from Claremont McKenna College

Jeff McKellips
Chief Operating Officer
& Senior Advisor



- 15 Years President/Co-Founder National Mortgage Banking Co.
- 17 years CEO/Founder Real Estate Investment Co.
- Forced Physics Investor & Senior Advisor 9 Years
- Graduate University of Southern California Business School, Emphasis in Real Estate Finance & Development

Christopher Knight
Business Development
Executive



- Veteran technologist with decades of experience in data-center architecture, CPU/GPU thermal systems, and cybersecurity
- Former senior leader at Cisco, Avaya, and Rahi with strong background in solution engineering
- Advises and supports strategic growth for emerging compute and cooling technologies

Why Invest Now?

A rare opportunity to invest in a revolutionary cooling technology that will change the world

Industry Forces We Solve

- Heat is the biggest challenges holding the chip industry back
- Heavy pressure on regional power grids and water supplies
- Direct to Chip Liquid cooling is expensive, complex, and struggling to scale
- Operators need scalable, non-liquid solutions



National headlines underscore the magnitude of the challenge



Why JouleForce™

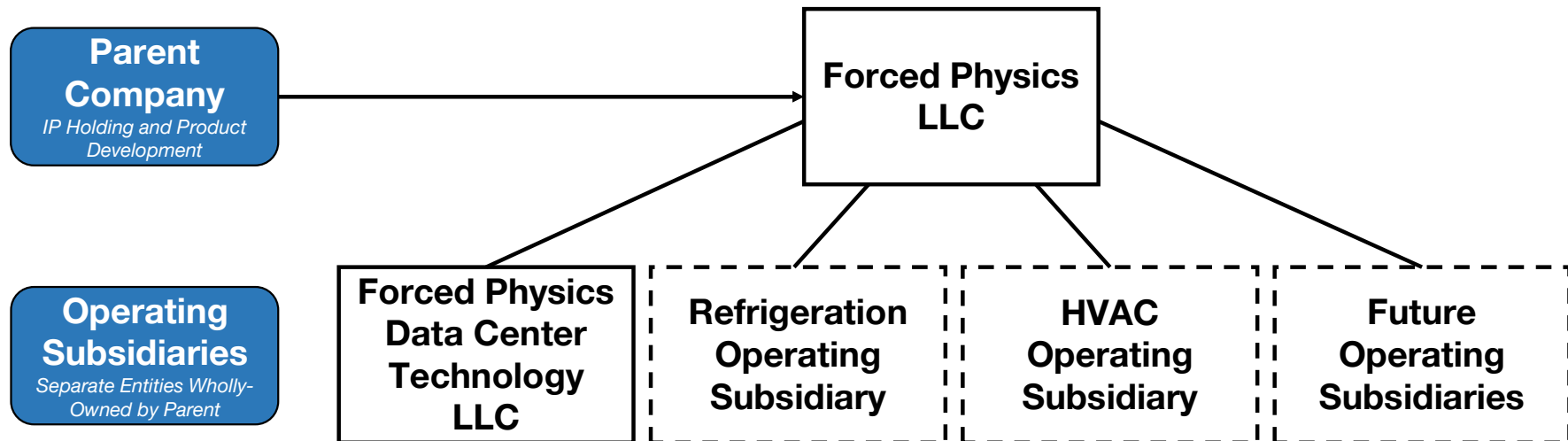
- Air-based high-density cooling solution ready for deployment today
- Works for both new construction and retrofits
- Large market capture potential in the fastest growing infrastructure sector
- Significant CapEx and OpEx savings compared to liquid cooling

Pro-Forma Financial Statement



Category	Year 1		Year 2		Year 3		Year 4		Year 5	
	\$ Amount	% of Revenue	\$ Amount	% of Revenue	\$ Amount	% of Revenue	\$ Amount	% of Revenue	\$ Amount	% of Revenue
Revenue										
- Hardware Sales	\$7,000,000	100.0%	\$32,000,000	100.0%	\$128,000,000	100.0%	\$320,000,000	100.0%	\$768,000,000	100.0%
Total Revenue	\$7,000,000	100.0%	\$32,000,000	100.0%	\$128,000,000	100.0%	\$320,000,000	100.0%	\$768,000,000	100.0%
Cost of Goods Sold										
- Hardware Sales	\$4,101,216	58.6%	\$18,748,416	58.6%	\$37,496,832	29.3%	\$74,993,664	23.4%	\$149,987,328	19.5%
Total Cost of Goods Sold	\$4,101,216	58.6%	\$18,748,416	58.6%	\$37,496,832	29.3%	\$74,993,664	23.4%	\$149,987,328	19.5%
Gross Profit	\$2,898,784	41.4%	\$13,251,584	41.4%	\$90,503,168	70.7%	\$245,006,336	76.6%	\$618,012,672	80.5%
SG&A Expenses										
- Research & Development	\$797,590	11.4%	\$1,117,590	3.5%	\$6,176,385	4.8%	\$15,440,963	4.8%	\$45,000,000	5.9%
- Operating & Administrative	\$899,410	12.8%	\$1,444,410	4.5%	\$2,166,615	1.7%	\$6,499,845	2.0%	\$80,000,000	10.4%
- Sales & Marketing	\$533,100	7.6%	\$1,568,400	4.9%	\$3,840,000	3.0%	\$6,400,000	2.0%	\$11,520,000	1.5%
Total SG&A Expenses	\$2,230,100	31.9%	\$4,130,400	12.9%	\$12,183,000	9.5%	\$28,340,808	8.9%	\$136,520,000	17.8%
Total Operating Income	\$668,684	9.6%	\$9,121,184	28.5%	\$78,320,168	61.2%	\$216,665,529	67.7%	\$481,492,672	62.7%

Legal Entity Structure



Note: Entities outlined in dashed boxes have not yet been legally formed

FP LLC will continue its product development efforts creating new applications of JouleForce® Cooling. As a result, additional operating subsidiary companies will be formed that have obtained licenses to commercialize products and services for its industry

Forced Physics Valuation Model & Capitalization Table

Valuation Method

Harvard Business School – Prof. Bill Sahlman

FP LLC Valuation Calculation

- Terminal Value = $\$128\text{MM} \times .55 \times 40 = \2.81B
- Pre-Money Valuation = $\$2.81\text{B} / 20 - \$8\text{M} = \mathbf{\$133\text{MM}}$

FP LLC Valuation Assumption Variables

- Harvest Year = Year 3
- Projected Revenue in Harvest Year = $\$128\text{MM}$
- Projected Margin = 55%
- Industry P/E Ratio = 40
- Investor ROI = 20

Valuation Formula: Terminal Value at Harvest Year = Projected Revenue x Projected Margin x Industry P/E Ratio

FP LLC Capitalization Table Summary

	November 2025	
Unit Type	Unit Balance	Ownership %
Founder Issued	28,500,000	45.75%
Investor Issued	6,818,751	10.95%
Advisor Issued	1,527,124	2.45%
Employee Issued	3,950,293	6.34%
Convertible Notes	17,759,544	28.51%
Employee Accrued	627,007	1.01%
Advisor Accrued	135,000	0.22%
Warrants	2,979,516	4.78%
Totals for Units	62,297,234	100.00%
Unit Type	Unit Balance	Ownership %
Issued	40,796,168	65.49%
Outstanding	21,501,067	34.51%
Total	62,297,234	100.00%

Contact Us

Thank you!

For additional information or inquiries,
Please contact

Jeff McKellips
Forced Physics

Title: Chief Operating Officer

Cell: (949) 929-1015

Email: jmckellips@forcedphysics-dct.com



Disclaimer & Financial Disclosures



Disclaimer

This presentation has been prepared for informational purposes only. It is not an offer or solicitation of an offer to buy or to sell investments in securities. It is being provided on a confidential basis for use by a limited number of parties. By accepting the confidential presentation, the recipient agrees that they will keep confidential the information contained herein or made available in connection with any further investigation of Forced Physics LLC. Nothing contained herein is, or should be relied on, as a promise or representation as to the future performance of the Company

Financial Disclosure Regarding Forward Looking Statements

Certain information set forth in this presentation contains “forward-looking information”, including “future oriented financial information” and “financial outlook”, under applicable securities laws (collectively referred to herein as forward-looking statements). Except for statements of historical fact, information contained herein constitutes forward-looking statements and includes, but is not limited to, the (i) projected financial performance of the Company; (ii) completion of, and the use of proceeds from, the investment being offered hereunder; (iii) the expected development of the Company’s business, projects and joint ventures; (iv) execution of the Company’s vision and growth strategy, including with respect to future M&A activity and global growth; (v) sources and availability of third-party financing for the Company’s projects; (vi) completion of the Company’s projects that are currently underway, in development or otherwise under consideration; (vi) renewal of the Company’s current customer, supplier and other material agreements; and (vii) future liquidity, working capital, and capital requirements. Forward-looking statements are provided to allow potential investors the opportunity to understand management’s beliefs and opinions in respect of the future so that they may use such beliefs and opinions as one factor in evaluating an investment

These statements are not a guarantee of future performance and undue reliance should not be placed on them. Such forward-looking statements necessarily involve known and unknown risks and uncertainties, which may cause actual performance and financial results in future periods to differ materially from any projections of future performance or result expressed or implied by such forward-looking statement

Although forward-looking statements contained in this presentation are based upon what management of the Company believes are reasonable assumptions, there can be no assurance that forward-looking statements will prove to be accurate, as actual results and future events could differ materially from those anticipated in such statements. The Company undertakes no obligation to update forward-looking statements if circumstances or management’s estimates or opinions should change except as required by applicable securities laws. The reader is cautioned not to place undue reliance on forward-looking statements